



**CLIVEPEARCE**  
Now you're moving

2 Bedrooms

Flat/Apartment

Guide Price

£200,000

Located in

Truro



[www.clivepearceproperty.com](http://www.clivepearceproperty.com)



# Brunel Court

Truro | Cornwall | TR1 3AE



A spacious two double bedroom apartment with stylish open plan living, fitted kitchen, large bathroom, parking and city views. Lift. NO ONWARD CHAIN.

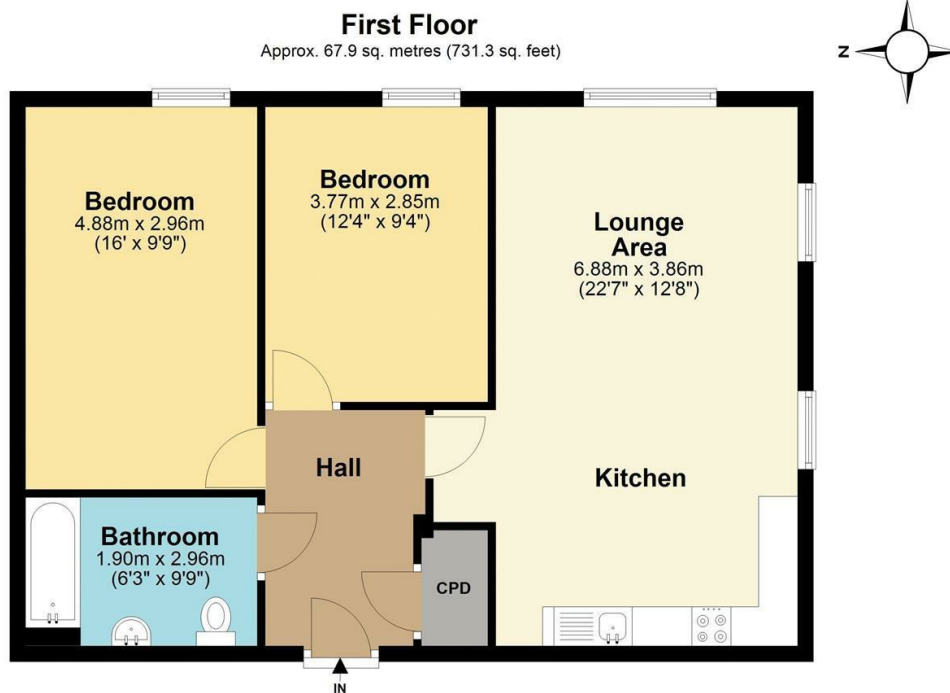


# Brunel Court

£200,000 Leasehold



- Two double bedrooms
- Lift
- Fitted kitchen with integrated oven, hob and extractor
- Gas central heating
- City views
- First floor apartment
- NO ONWARD CHAIN
- Bathroom with white suite and shower over
- Parking space



Total area: approx. 67.9 sq. metres (731.3 sq. feet)

All floor plan dimensions are approximate and provided for illustrative purposes only. While every effort is made to ensure accuracy, measurements may vary, and no guarantee is given regarding their precision. Prospective buyers or tenants should verify all dimensions independently before making any decisions.  
Plan produced using PlanUp.

## Council Tax Band C

## Local Authority

Agents Note: Whilst every care has been taken to prepare these particulars, they are for guidance purposes only. All measurements are approximate and are for general guidance purposes only and whilst every care has been taken to ensure their accuracy, they should not be relied upon and potential buyers/tenants are advised to recheck the measurements.

Energy Efficiency Rating		
	Current	Potential
Very energy efficient - lower running costs		
(92 plus) <b>A</b>		
(81-91) <b>B</b>		
(69-80) <b>C</b>		
(55-68) <b>D</b>		
(39-54) <b>E</b>		
(21-38) <b>F</b>		
(1-20) <b>G</b>		
Not energy efficient - higher running costs		
<b>England &amp; Wales</b>	EU Directive 2002/91/EC	

31 Lemon Street  
Truro  
Cornwall  
TR1 2LS



**CLIVEPEARCE**  
Now you're moving

hello@clivepearceproperty.com

01872 272622

www.clivepearceproperty.com